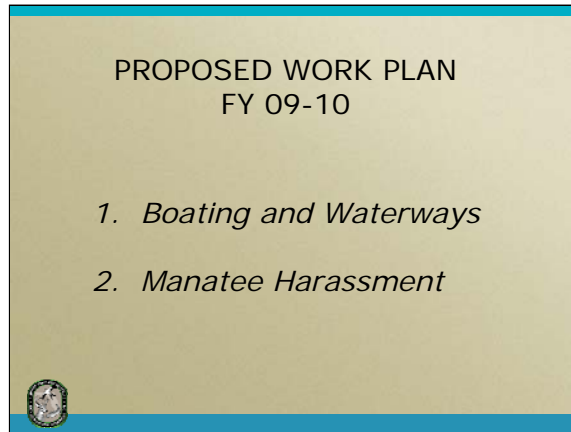


FLORIDA FISH AND WILDLIFE  
CONSERVATION COMMISSION

Division of Law Enforcement  
FY 09-10 Work Plan



Colonel Julie Jones, Director  
Division of Law Enforcement  
December 3, 2008



**The Division will develop rules for adoption in three work areas. These rules will address the Regulation of speed in the Florida Intracoastal Waterway (ICW), boat access, boating education, and manatee harassment.**

**In each instance, we will hold workshops with our stakeholders to provide them our findings in each of the rulemaking areas, and to obtain their input on these issues.**

**We will work closely with the U.S. Fish and Wildlife Service on the manatee harassment issue.**

PROPOSED WORK PLAN  
FY 09-10

68D-24.017 F.A.C.: Palm Beach County  
Boating Restricted Areas

- Begin stakeholder work on possible amendments to the boating safety zones within the Florida Intracoastal Waterway (ICW) in Palm Beach county
- Pending majority consensus, begin the rulemaking process in 2009




**In 2007, at the request of Palm Beach County and other local governments, the Boating and Waterways staff initiated a boating safety analysis to determine if there were any boating safety issues that needed to be addressed within the Intracoastal Waterway (ICW).**

**The data supports some amendment to the existing rule. Staff will initiate workshops and, pending consensus, begin rulemaking in 2009.**

**PROPOSED WORK PLAN  
FY 09-10**

68D-24.144 F.A.C.: Monroe County Boating  
Restricted Areas

- Explore the possibility of new boating safety zones within the Florida Intracoastal Waterway (ICW) in the Upper Keys
- Analyze data: If boating safety issues are found and are valid, rulemaking will begin in 2009



**At the request of Monroe County, the Boating and Waterways staff initiated research on boating accident data in the Upper Keys to determine if there were any boating safety issues that needed to be addressed this coming year.**

**If boat-use trends and boating-accident data indicate a problem, staff will initiate workshops and rulemaking in 2009.**

PROPOSED WORK PLAN  
FY 09-10


Vessel Management, Anchoring and Mooring

- Pending passage of proposed legislative language
- Initiate workshops in late 2009 and rulemaking in 2010



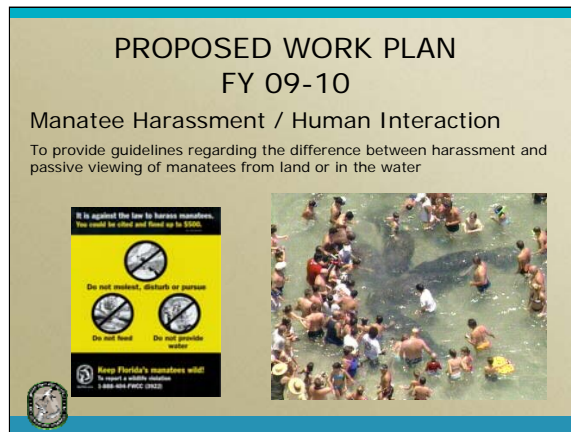
**Pending the passage of vessel management, anchoring and mooring legislation during the 2009 Legislative Session, staff will begin workshops in late 2009 and initiate rulemaking in 2010.**

Proposed Rulemaking Schedule FY 09-10	
<ul style="list-style-type: none"> <li>•Rule Development Notice - Early to Mid FY 2009-10</li> <li>•Final Public Hearing Mid to Late FY 2009-10</li> </ul>	<ul style="list-style-type: none"> <li>~Palm Beach County Boating Restricted Area (68D-24.017 F.A.C.)</li> </ul>
<ul style="list-style-type: none"> <li>•Rule Development Notice – Mid FY 2009-10</li> <li>•Final Public Hearing Late FY 2009-10</li> <li>•TBD 2009-10</li> </ul>	<ul style="list-style-type: none"> <li>~Monroe County Boating Restricted Area (68D-24.144 F.A.C.)</li> <li>~Anchoring and Mooring Rule Making</li> </ul>



**Based on public input and our data assessments, we will proceed with rule making according to this schedule (with the caveat that the stakeholder input will drive the actual date to bring this to the Commission).**

**Pending the passage of vessel management, anchoring and mooring legislation during the 2009 Legislative Session, staff will begin workshops in late 2009 and initiate rulemaking in 2010.**




**Human interaction with manatees has become a growing issue of concern in the Crystal River area. Before this becomes a statewide issue, staff will consider re-defining the definition of harassment and developing guidelines for recreational activities. We will be working closely with our U.S. Fish and Wildlife Service partners in vetting this issue.**

**Activities under consideration for regulation:**

- **Watering,**
  - **feeding (as stated in law)**
  - **pursuing**
  - **touching**
  - **chasing**
- 
- **We anticipate bringing the issue to the Commission in 2010.**

Proposed Rulemaking Schedule FY 09-10

<ul style="list-style-type: none"><li>•Rule Development Notice – Early to Mid FY 2009-10</li><li>•Final Pubic Hearing Mid to Late FY 2009-10</li></ul>	–Manatee Harassment / Human Interaction Rule
--	--



**Staff has been working with FWC Imperiled Species and the U.S. Fish and Wildlife Service in evaluating manatee harassment issues. We will continue to vet the issues with stakeholders this year and in early 2009. We expect to initiate rulemaking in early to mid 2009.**

Potential LE Issues  
for Commission Review

- Emerging Boating Safety Issues
- Stakeholder Outreach – COMSTAT approach



**Boating safety issues and stakeholder outreach will be presented to Commissioners in the form of a staff report when appropriate.**

Questions?

