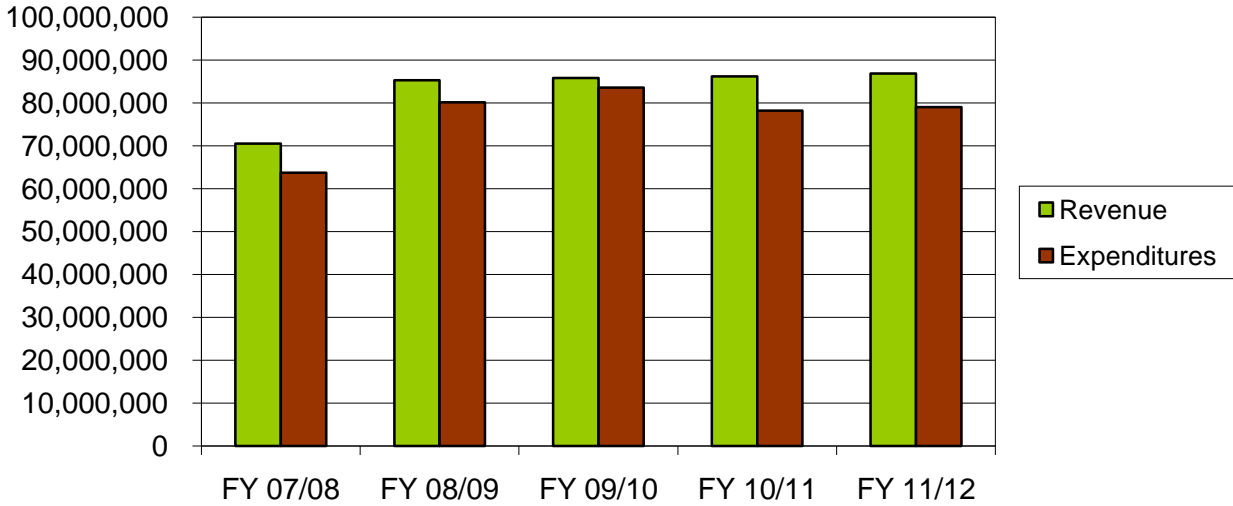
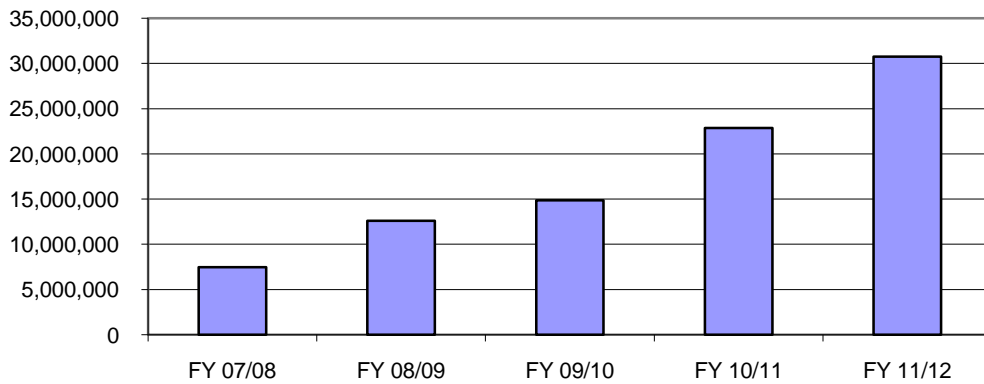


Fish and Wildlife Conservation Commission  
 Financial Report as of August 31, 2008  
**Marine Resources Conservation Trust Fund**

**Projected Fund Activity**



**Projected Fund Balance**

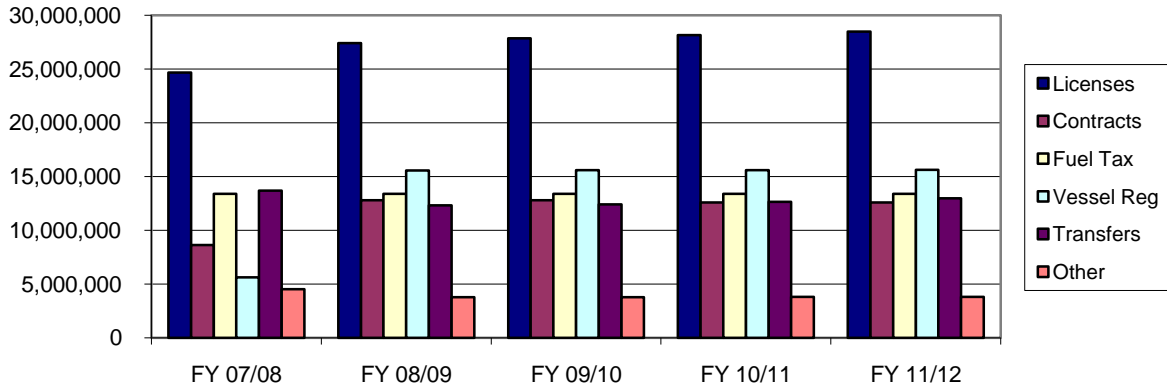


	FY 07/08	FY 08/09	FY 09/10	FY 10/11	FY 11/12
Fund Balance	7,473,070	12,601,249	14,859,221	22,875,651	30,757,283

- Fee increases and supplemental funding approved by the Legislature in 2007 and 2008 stabilized this trust fund for the long term.
- Current programs can accommodate inflation and remain stable well into the future

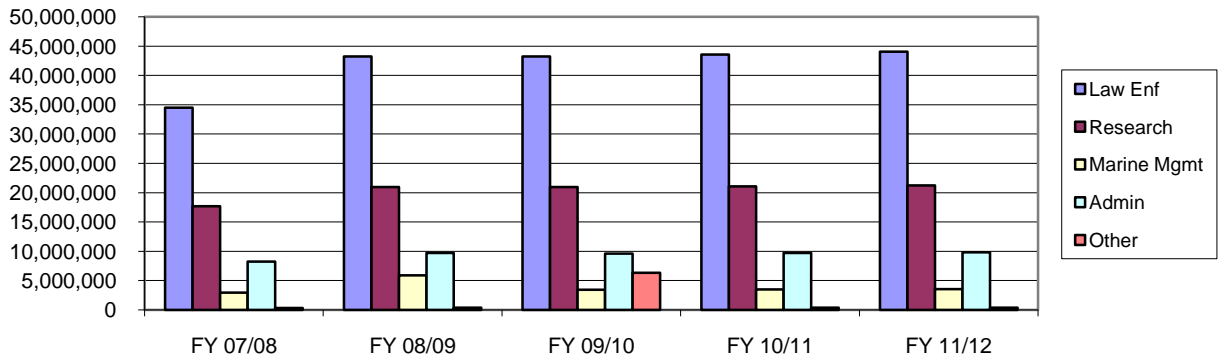
Fish and Wildlife Conservation Commission  
 Financial Report as of August 31, 2008  
**Marine Resources Conservation Trust Fund**  
**Sources and Uses**

**Revenue Sources**



	FY 07/08	FY 08/09	FY 09/10	FY 10/11	FY 11/12
Licenses	24,660,600	27,419,254	27,864,973	28,148,526	28,479,520
Contracts	8,616,829	12,801,857	12,801,857	12,601,767	12,601,767
Fuel Tax	13,400,000	13,400,000	13,400,000	13,400,000	13,400,000
Vessel Reg	5,621,297	15,565,084	15,580,649	15,596,230	15,611,826
Transfers	13,697,242	12,308,154	12,408,154	12,658,154	12,978,154
Other	4,518,138	3,775,713	3,786,303	3,796,999	3,807,803
<b>Total</b>	<b>70,514,106</b>	<b>85,270,062</b>	<b>85,841,936</b>	<b>86,201,676</b>	<b>86,879,070</b>

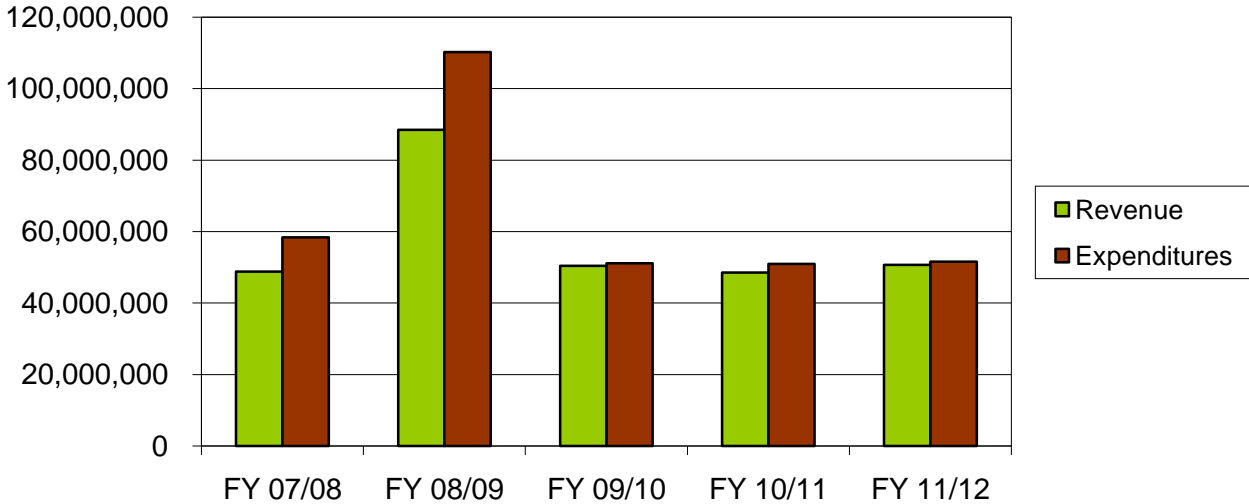
**Fund Uses**



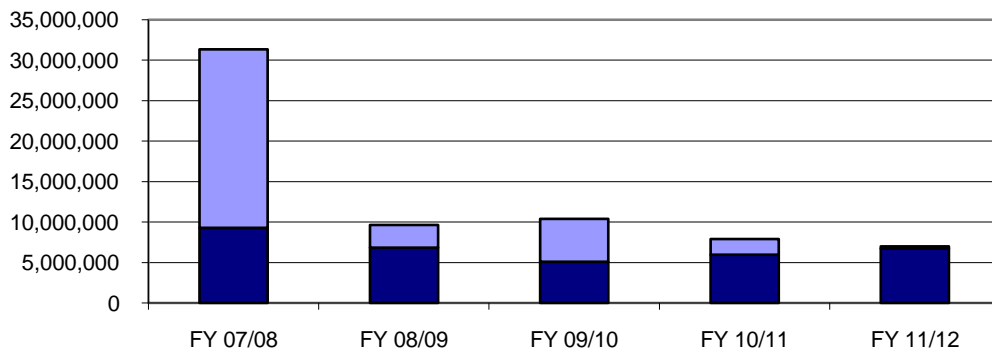
	FY 07/08	FY 08/09	FY 09/10	FY 10/11	FY 11/12
Law Enf	34,502,645	43,204,391	43,204,391	43,570,299	44,067,324
Research	17,705,370	20,936,242	20,936,242	21,057,454	21,222,100
Marine Mgmt	2,959,451	5,914,232	3,457,577	3,492,374	3,539,639
Admin	8,255,985	9,732,017	9,630,754	9,710,120	9,813,375
Other	336,751	355,000	6,355,000	355,000	355,000
<b>Total</b>	<b>63,760,202</b>	<b>80,141,882</b>	<b>83,583,964</b>	<b>78,185,246</b>	<b>78,997,439</b>

Fish and Wildlife Conservation Commission  
 Financial Report as of August 31, 2008  
**State Game Trust Fund**

**Projected Fund Activity**



**Projected Fund Balance**



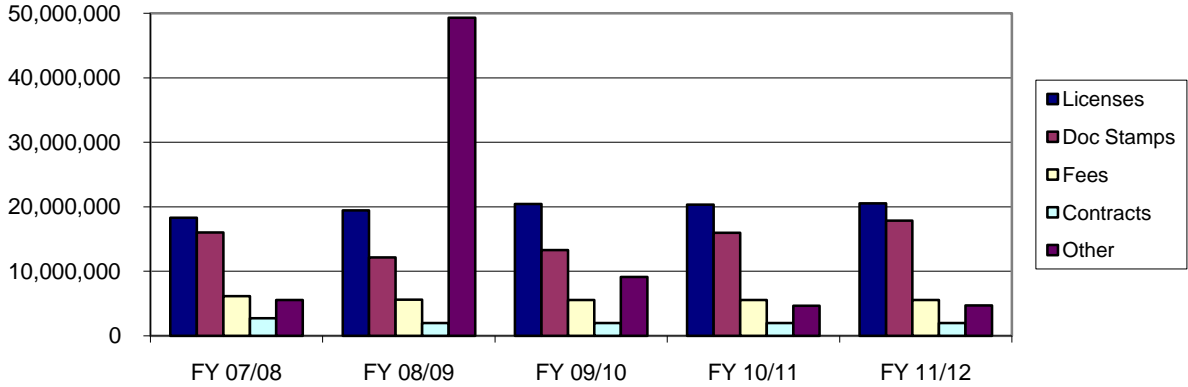
Fund Balance	FY 07/08	FY 08/09	FY 09/10	FY 10/11	FY 11/12
Doc Stamp	22,081,360	2,802,412	5,310,272	1,938,079	282,312
Other	9,273,159	6,814,069	5,074,978	5,973,304	6,701,485
<b>Total</b>	<b>31,354,519</b>	<b>9,616,481</b>	<b>10,385,250</b>	<b>7,911,383</b>	<b>6,983,797</b>

- Fee increases and supplemental funding approved by the Legislature in 2007 and 2008 stabilized this trust fund for the long term.
- The invasive plant management program is housed in this trust fund temporarily during FY 08/09. It will be fully reimbursed and not effect the trust.
- A significant drop in documentary stamp taxes is stressing the trust fund in the short term.
- License funded programs remain stable and can accommodate inflation well into the future.

Fish and Wildlife Conservation Commission  
 Financial Report as of August 31, 2008

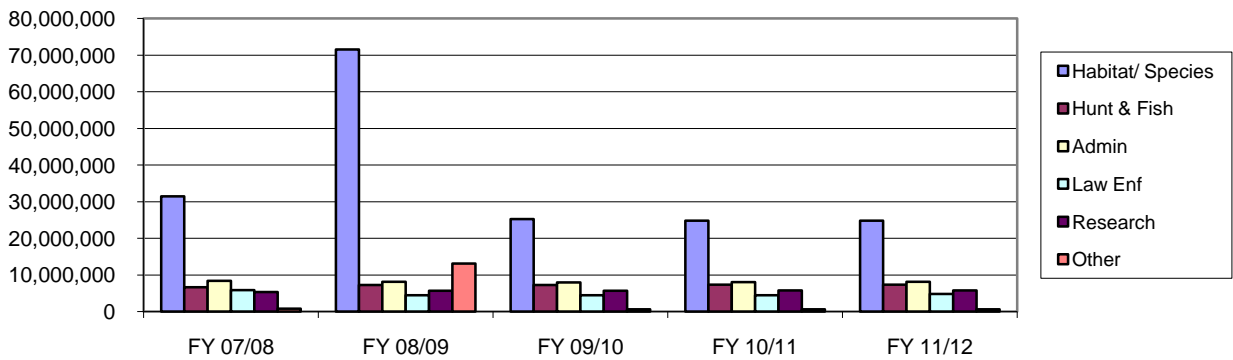
**State Game Trust Fund  
 Sources and Uses**

**Revenue Sources**



	FY 07/08	FY 08/09	FY 09/10	FY 10/11	FY 11/12
Licenses	18,313,502	19,444,359	20,414,226	20,360,821	20,548,268
Doc Stamps	15,998,140	12,150,000	13,300,000	15,950,000	17,870,000
Fees	6,169,675	5,588,610	5,580,085	5,571,192	5,563,022
Contracts	2,742,872	1,977,763	1,980,750	1,983,767	1,983,767
Other	5,547,029	49,327,761	9,103,797	4,652,905	4,705,334
<b>Total</b>	<b>48,771,218</b>	<b>88,488,493</b>	<b>50,378,858</b>	<b>48,518,685</b>	<b>50,670,391</b>

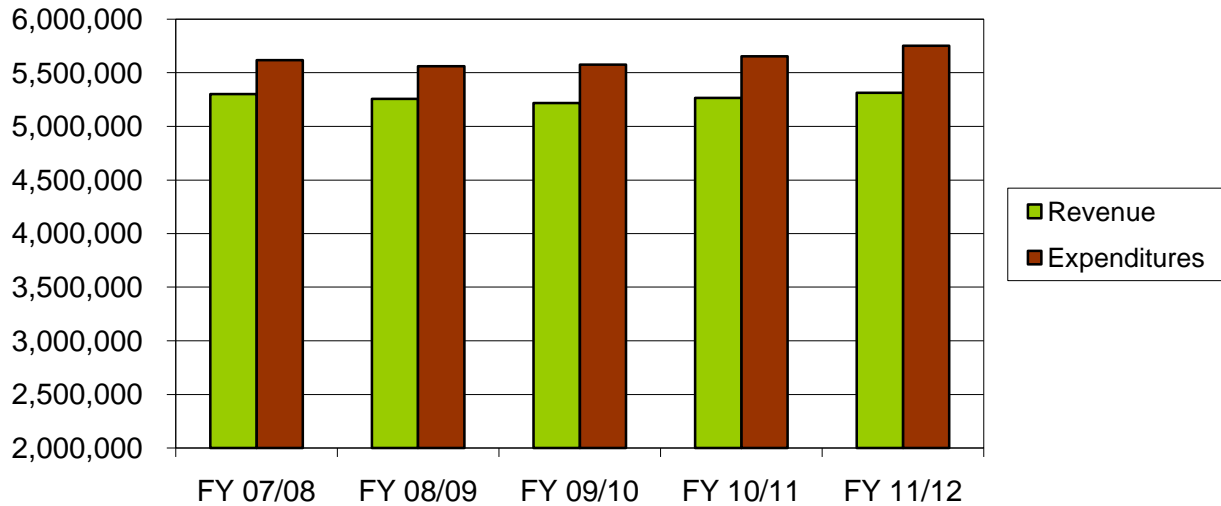
**Fund Uses**



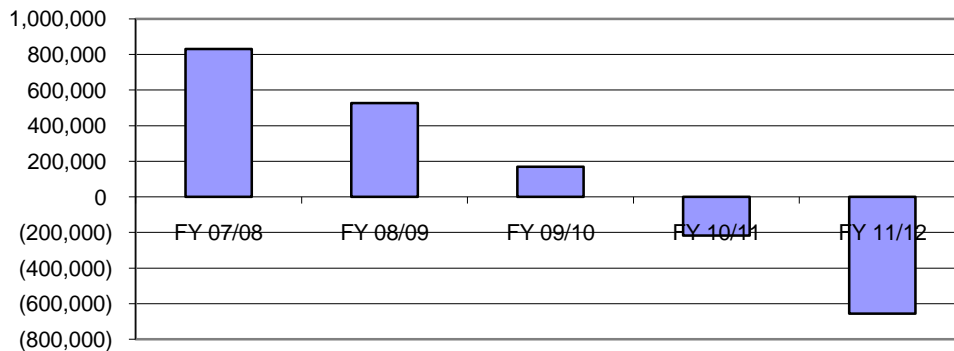
	FY 07/08	FY 08/09	FY 09/10	FY 10/11	FY 11/12
Habitat/ Species	31,411,870	71,491,124	25,226,084	24,833,405	24,779,183
Hunt & Fish	6,638,844	7,254,950	7,234,950	7,293,987	7,374,178
Admin	8,353,591	8,164,810	7,955,562	8,027,303	8,164,772
Law Enf	5,866,592	4,495,477	4,433,196	4,469,667	4,831,488
Research	5,313,739	5,666,750	5,666,750	5,725,768	5,805,934
Other	828,230	13,142,422	642,422	642,422	642,422
<b>Total</b>	<b>58,412,867</b>	<b>110,215,533</b>	<b>51,158,964</b>	<b>50,992,552</b>	<b>51,597,977</b>

Fish and Wildlife Conservation Commission  
 Financial Report as of August 31, 2008  
**Nongame Wildlife Trust Fund**

**Projected Fund Activity**



**Projected Fund Balance**

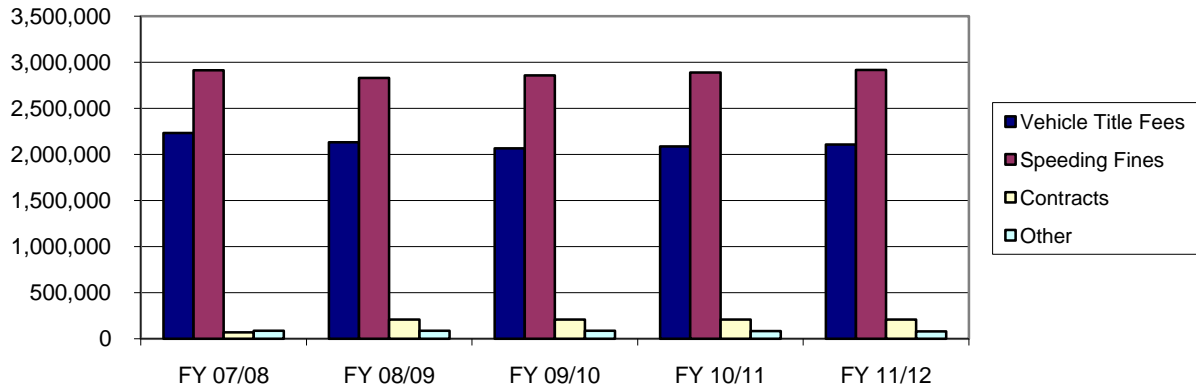


	FY 07/08	FY 08/09	FY 09/10	FY 10/11	FY 11/12
Fund Balance	831,500	527,597	169,774	(217,099)	(656,469)

- This trust fund was previously stable until a recent drop in vehicle title fee receipts and speeding fine revenues moved it out of balance.
- Staff is reviewing options to shift expenditures to other trusts and obtain additional revenue sources for this fund.

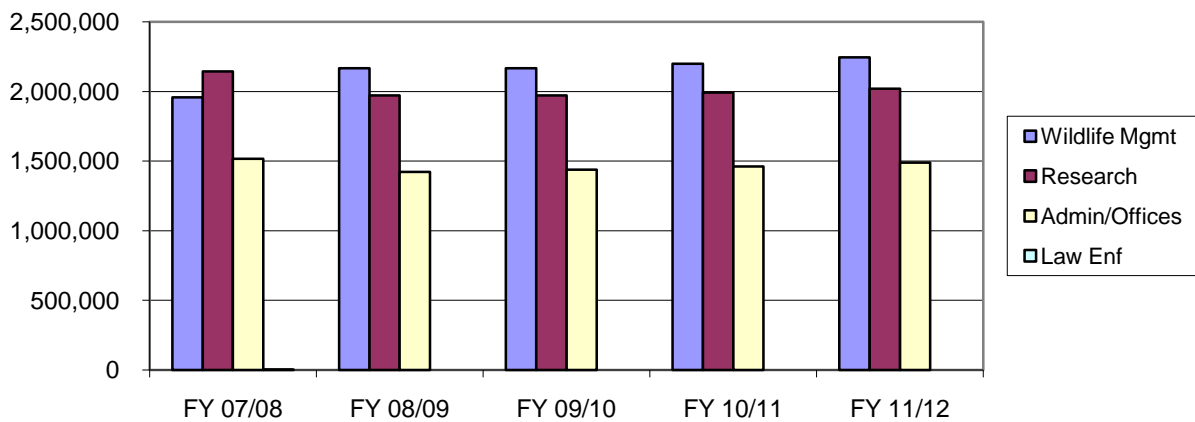
Fish and Wildlife Conservation Commission  
 Financial Report as of August 31, 2008  
**Nongame Wildlife Trust Fund**  
**Sources and Uses**

**Revenue Sources**



	FY 07/08	FY 08/09	FY 09/10	FY 10/11	FY 11/12
Vehicle Title Fees	2,233,325	2,131,340	2,067,400	2,088,074	2,108,955
Speeding Fines	2,913,495	2,830,132	2,858,730	2,887,617	2,916,796
Contracts	69,165	207,164	207,164	207,164	207,164
Other	86,050	87,229	85,597	82,955	80,413
<b>Total</b>	<b>5,302,035</b>	<b>5,255,865</b>	<b>5,218,892</b>	<b>5,265,811</b>	<b>5,313,328</b>

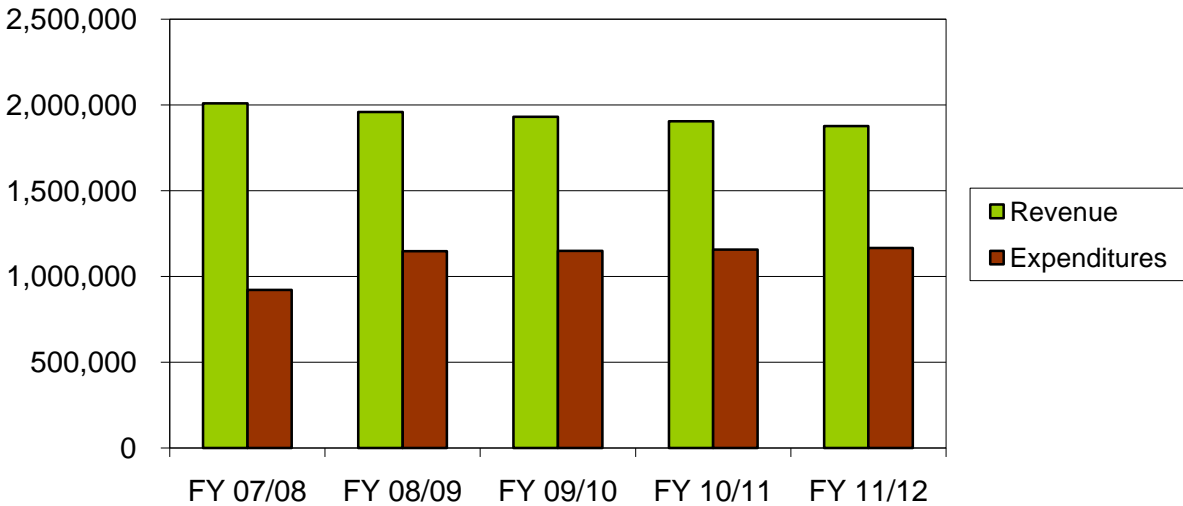
**Fund Uses**



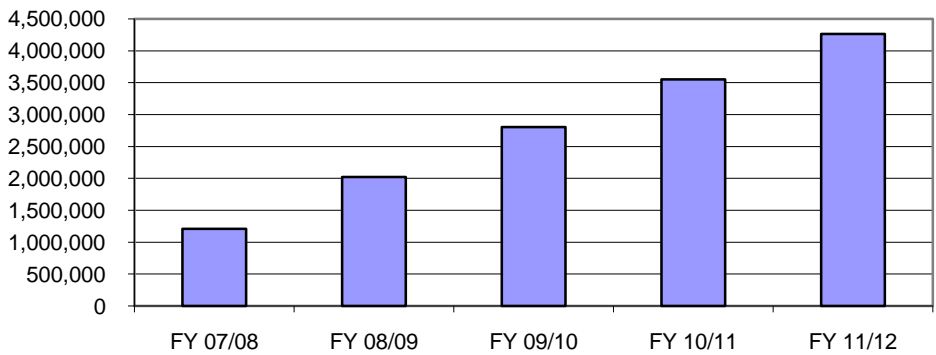
	FY 07/08	FY 08/09	FY 09/10	FY 10/11	FY 11/12
Wildlife Mgmt	1,957,309	2,165,783	2,165,783	2,199,499	2,245,297
Research	2,144,046	1,971,600	1,971,600	1,991,588	2,018,738
Admin/Offices	1,515,425	1,422,386	1,439,331	1,461,596	1,488,663
Law Enf	2,242	0	0	0	0
<b>Total</b>	<b>5,619,022</b>	<b>5,559,769</b>	<b>5,576,714</b>	<b>5,652,683</b>	<b>5,752,698</b>

Fish and Wildlife Conservation Commission  
 Financial Report as of August 31, 2008  
**Florida Panther Research and Management Trust Fund**

**Projected Fund Activity**



**Projected Fund Balance**

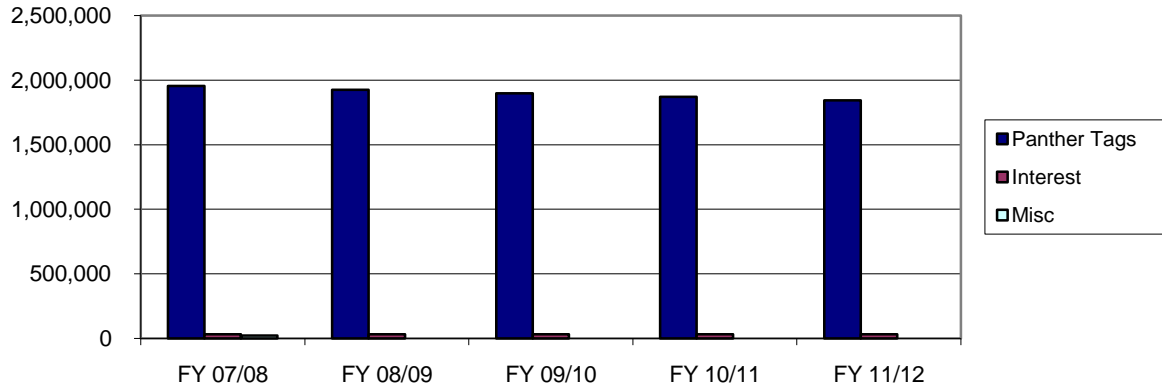


	FY 07/08	FY 08/09	FY 09/10	FY 10/11	FY 11/12
Fund Balance	1,210,152	2,021,351	2,803,559	3,551,700	4,263,325

- The 2007 Legislature reversed a 1996 action which had caused this trust fund to overspend annually. The fund is now stable with a growing fund balance.
- Revenue from tag sales improved last fiscal year, slowing the projected annual decline.
- This trust fund can now support limited program enhancement.
- Marketing efforts are expected to further stabilize tag sales.

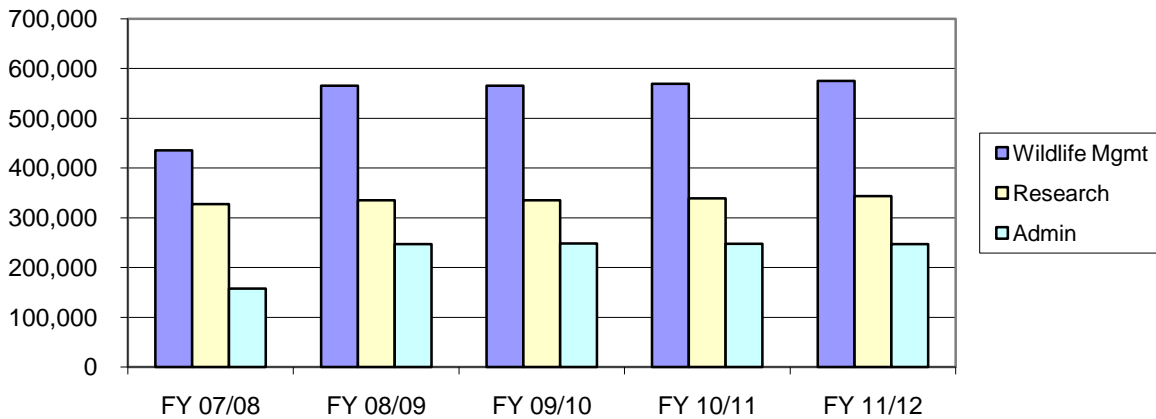
Fish and Wildlife Conservation Commission  
 Financial Report as of August 31, 2008  
**Florida Panther Research and Management Trust Fund**  
**Sources and Uses**

**Revenue Sources**



	FY 07/08	FY 08/09	FY 09/10	FY 10/11	FY 11/12
Panther Tags	1,954,491	1,926,356	1,898,626	1,871,296	1,844,359
Interest	32,702	32,768	32,834	32,901	32,901
Misc	21,738	0	0	0	0
<b>Total</b>	<b>2,008,931</b>	<b>1,959,124</b>	<b>1,931,461</b>	<b>1,904,196</b>	<b>1,877,259</b>

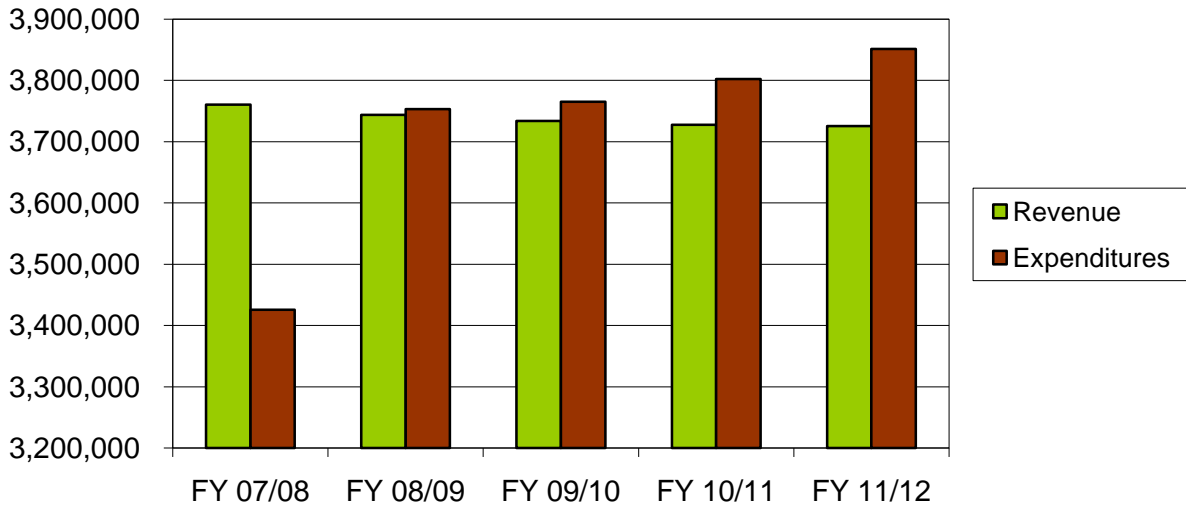
**Fund Uses**



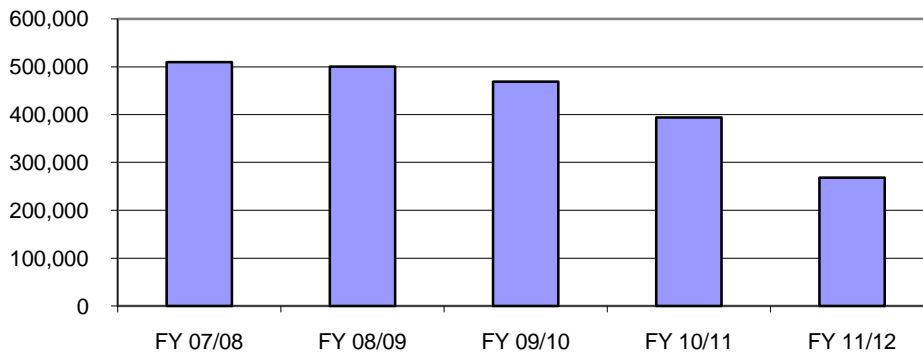
	FY 07/08	FY 08/09	FY 09/10	FY 10/11	FY 11/12
Wildlife Mgmt	435,728	565,241	565,241	569,338	574,903
Research	327,569	335,448	335,448	338,920	343,636
Admin	157,441	247,236	248,563	247,798	247,096
<b>Total</b>	<b>920,738</b>	<b>1,147,925</b>	<b>1,149,252</b>	<b>1,156,056</b>	<b>1,165,635</b>

Fish and Wildlife Conservation Commission  
 Financial Report as of August 31, 2008  
**Save The Manatee Trust Fund**

**Projected Fund Activity**



**Projected Fund Balance**

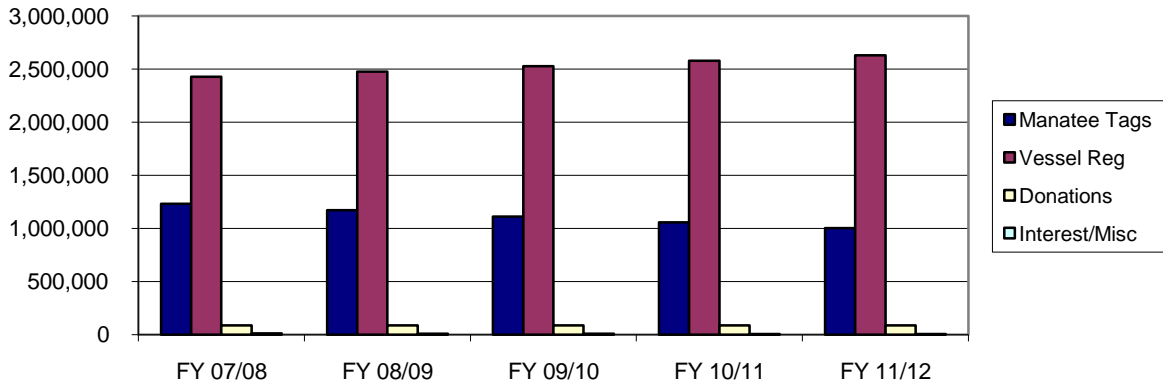


	FY 07/08	FY 08/09	FY 09/10	FY 10/11	FY 11/12
Fund Balance	509,638	500,034	468,692	394,255	268,483

- The 2007 Legislature removed law enforcement from this trust fund helping to stabilize it for the short term.
- Revenue from tag sales continues to decline about 5% annually which will eventually drive the fund back out of balance if not corrected
- Future marketing efforts will focus on reversing the decline in tag sales.

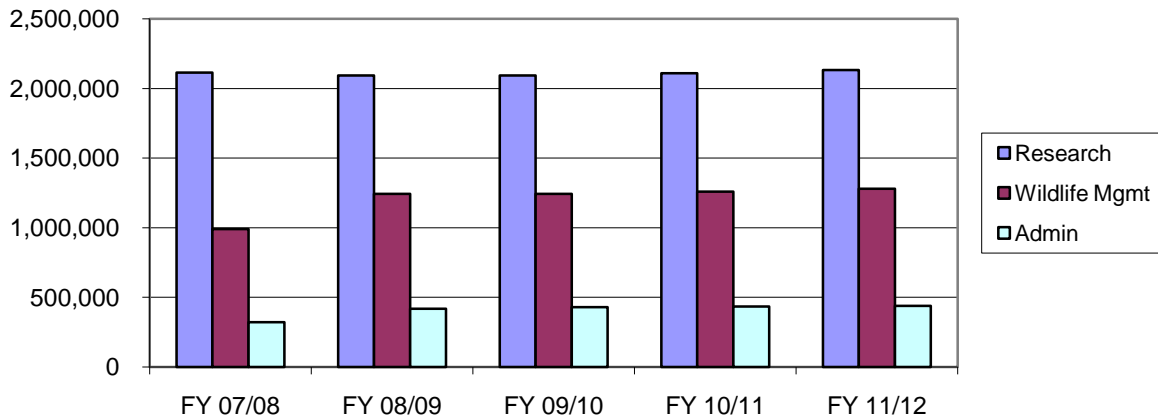
Fish and Wildlife Conservation Commission  
 Financial Report as of August 31, 2008  
**Save The Manatee Trust Fund**  
**Sources and Uses**

**Revenue Sources**



	FY 07/08	FY 08/09	FY 09/10	FY 10/11	FY 11/12
Manatee Tags	1,232,564	1,170,936	1,112,389	1,056,770	1,003,931
Vessel Reg	2,428,058	2,476,719	2,526,354	2,576,985	2,628,630
Donations	87,244	87,000	87,000	87,000	87,000
Interest/Misc	12,850	9,000	8,000	7,000	6,000
<b>Total</b>	<b>3,760,716</b>	<b>3,743,654</b>	<b>3,733,743</b>	<b>3,727,755</b>	<b>3,725,561</b>

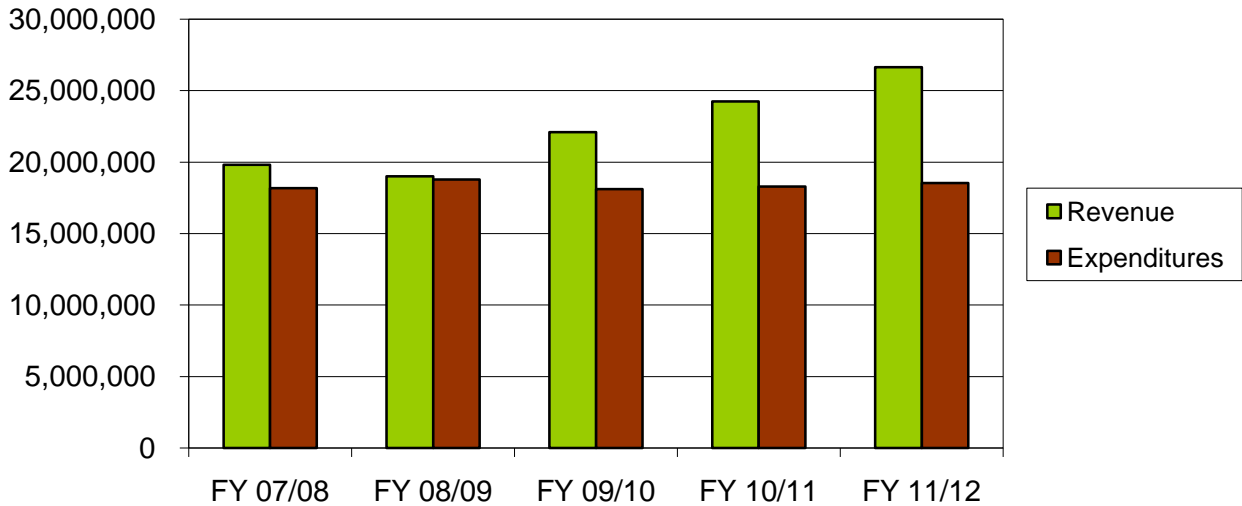
**Fund Uses**



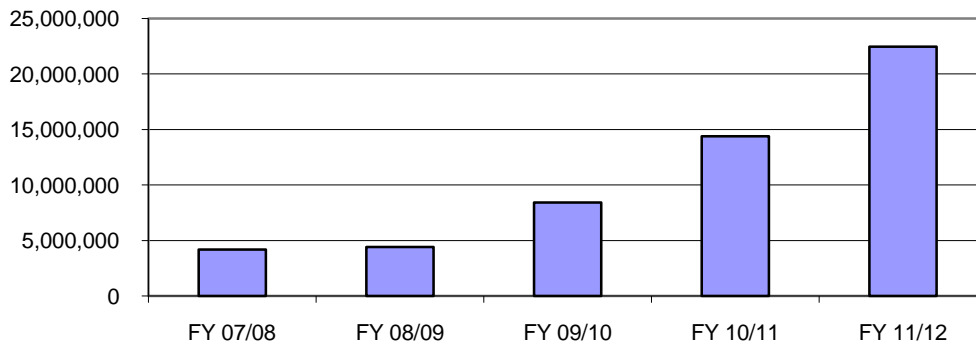
	FY 07/08	FY 08/09	FY 09/10	FY 10/11	FY 11/12
Research	2,114,034	2,092,693	2,092,693	2,109,829	2,133,106
Wildlife Mgmt	989,586	1,243,112	1,243,112	1,258,352	1,279,052
Admin	321,884	417,453	429,281	434,011	439,175
<b>Total</b>	<b>3,425,504</b>	<b>3,753,258</b>	<b>3,765,086</b>	<b>3,802,192</b>	<b>3,851,333</b>

Fish and Wildlife Conservation Commission  
 Financial Report as of August 31, 2008  
**Conservation and Recreation Lands Program Trust Fund**

**Projected Fund Activity**



**Projected Fund Balance**

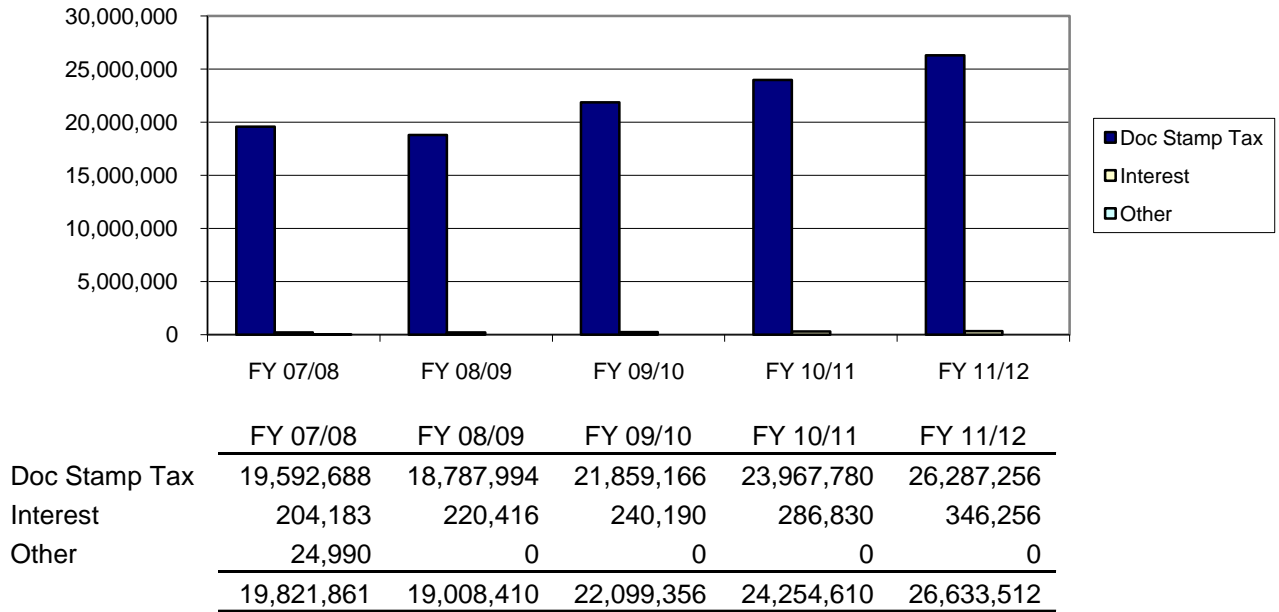


	FY 07/08	FY 08/09	FY 09/10	FY 10/11	FY 11/12
Fund Balance	4,193,239	4,420,991	8,414,447	14,377,569	22,474,923

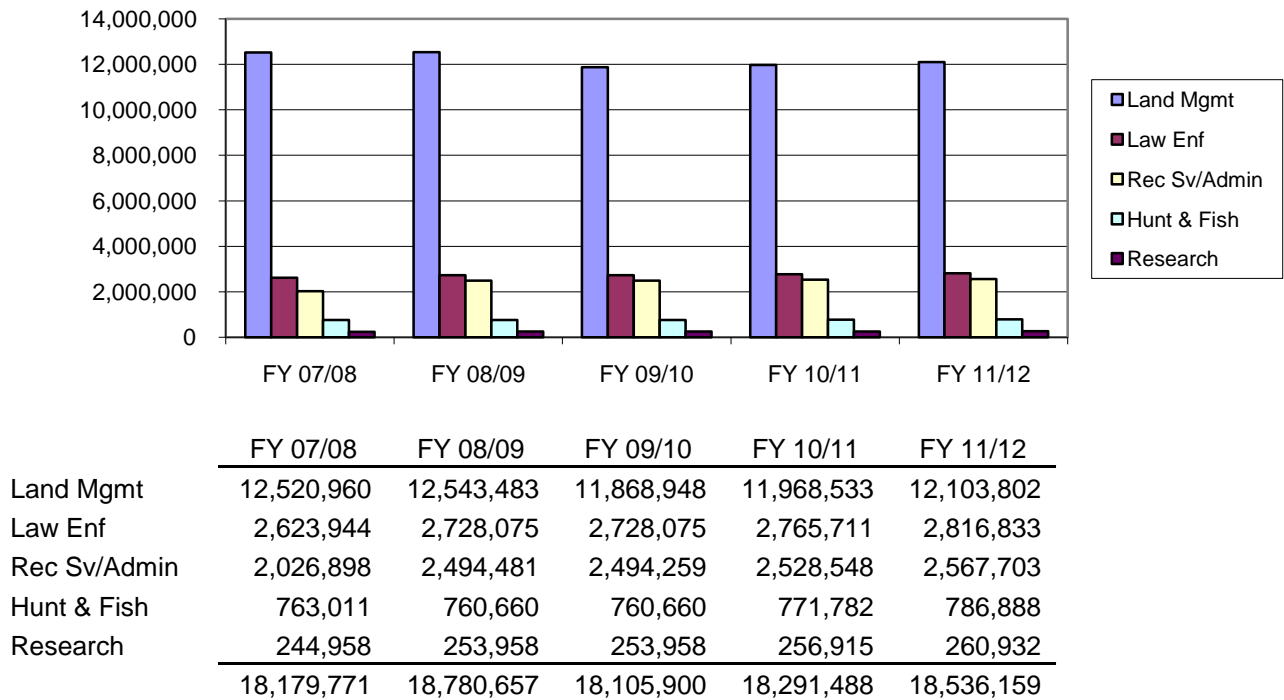
- This trust fund is stable and projected to improve over the long term when the documentary stamp tax revenues recover.
- Funding is provided from documentary stamp taxes to manage public conservation and recreation lands.

Fish and Wildlife Conservation Commission  
 Financial Report as of August 31, 2008  
**Conservation and Recreation Lands Program Trust Fund  
 Sources and Uses**

**Revenue Sources**

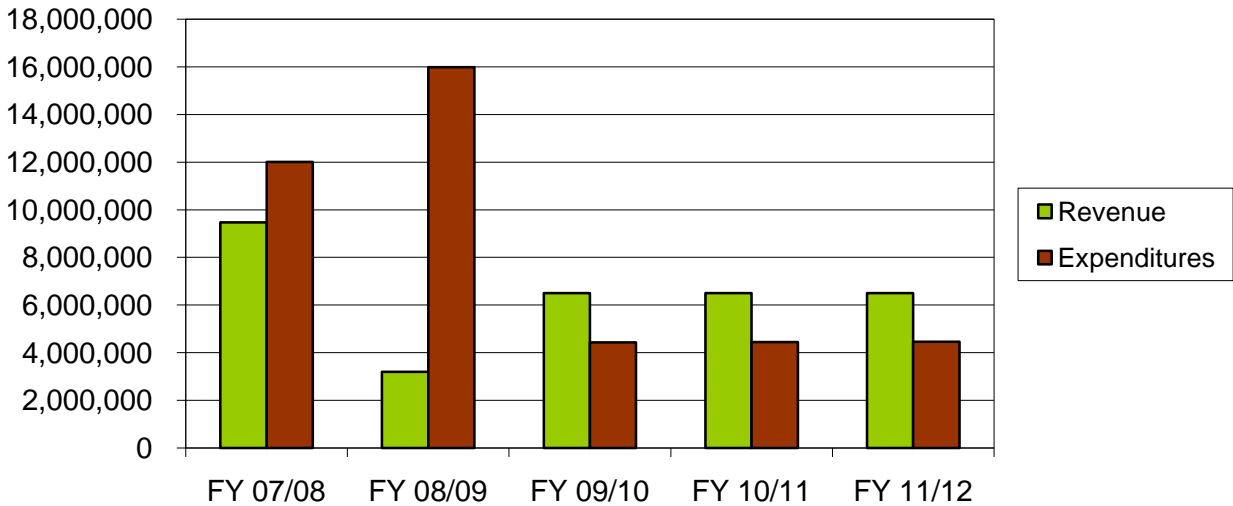


**Fund Uses**

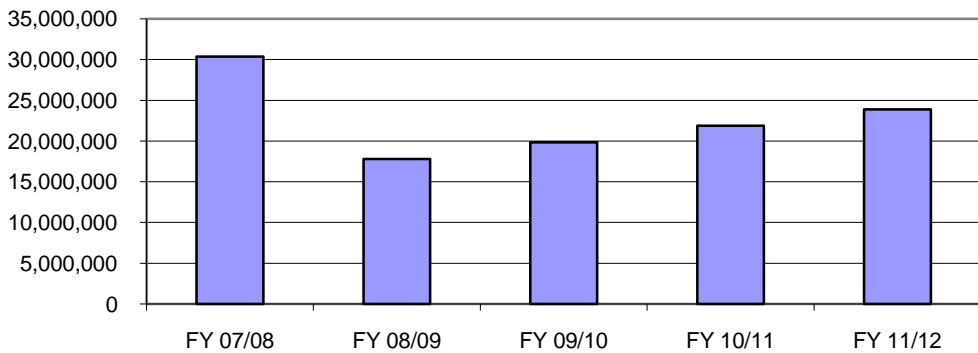


Fish and Wildlife Conservation Commission  
 Financial Report as of August 31, 2008  
**Land Acquisition Trust Fund**

**Projected Fund Activity**



**Projected Fund Balance**

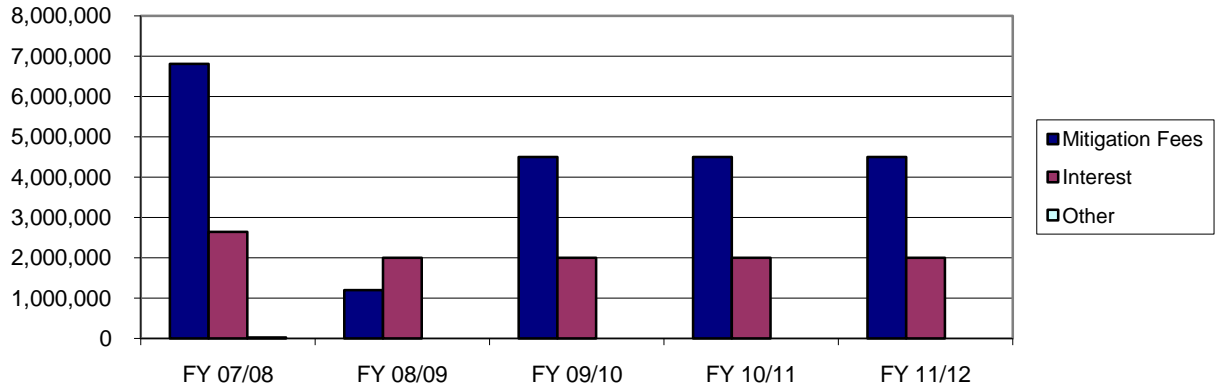


	FY 07/08	FY 08/09	FY 09/10	FY 10/11	FY 11/12
Fund Balance	30,350,422	17,787,940	19,830,590	21,863,402	23,884,442

- This trust fund is stable, with a large balance held in reserve to generate interest for mitigation park land management.
- FY 08/09 expenditures are high to spend the land acquisition balance and implement the gopher tortoise management plan.
- Revenues will drop in FY 08/09 due to permitting changes.

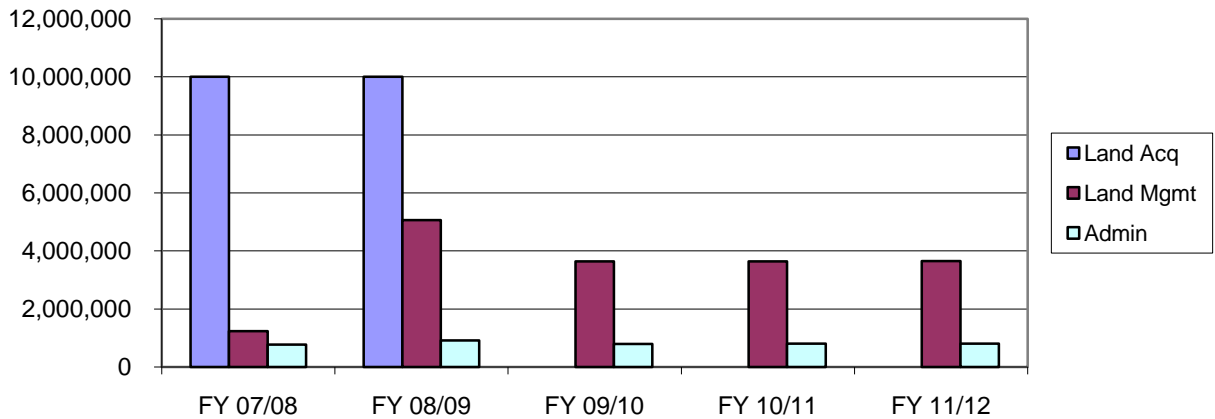
Fish and Wildlife Conservation Commission  
 Financial Report as of August 31, 2008  
**Land Acquisition Trust Fund**  
**Sources and Uses**

**Revenue Sources**



	FY 07/08	FY 08/09	FY 09/10	FY 10/11	FY 11/12
Mitigation Fees	6,806,360	1,200,000	4,500,000	4,500,000	4,500,000
Interest	2,644,668	2,000,000	2,000,000	2,000,000	2,000,000
Other	22,059	0	0	0	0
<b>Total</b>	<b>9,473,087</b>	<b>3,200,000</b>	<b>6,500,000</b>	<b>6,500,000</b>	<b>6,500,000</b>

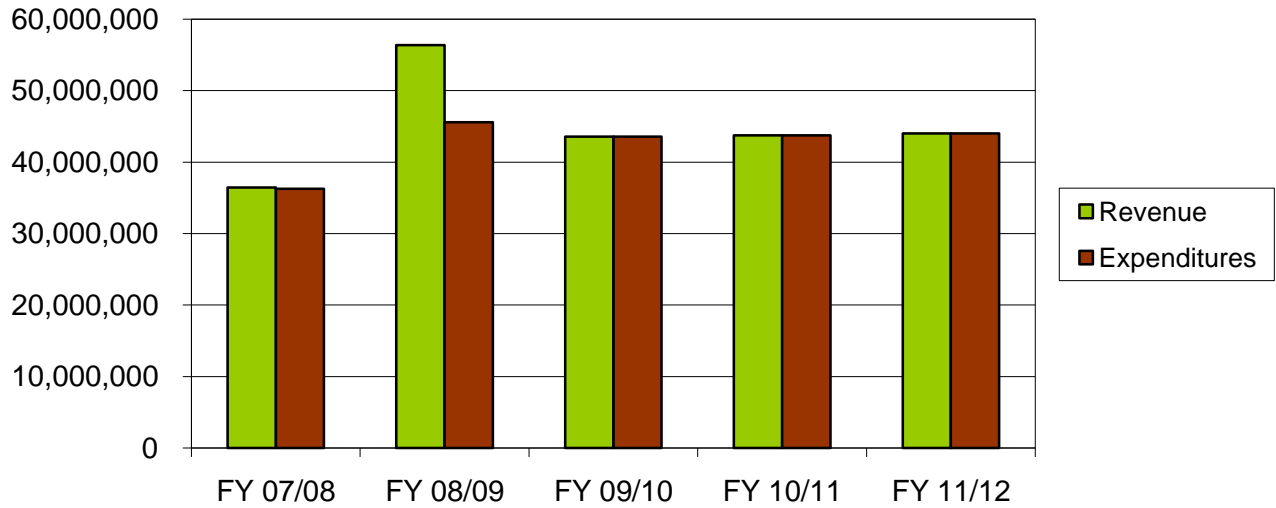
**Fund Uses**



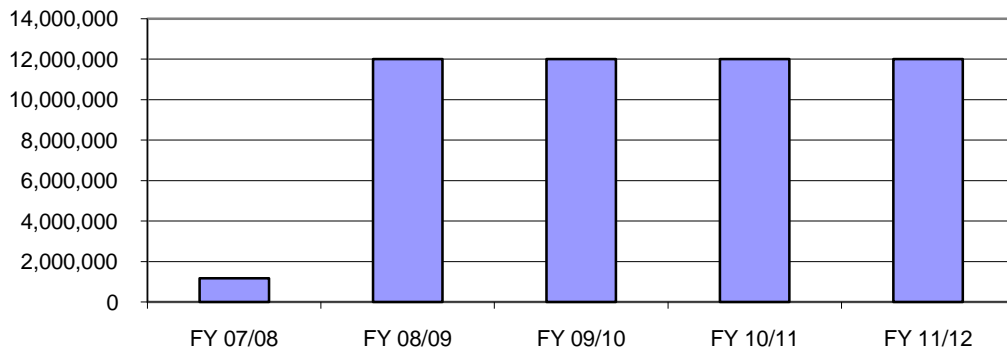
	FY 07/08	FY 08/09	FY 09/10	FY 10/11	FY 11/12
Land Acq	10,000,000	10,000,000	0	0	0
Land Mgmt	1,235,473	5,065,513	3,636,941	3,644,115	3,653,860
Admin	777,522	915,969	798,509	801,173	803,200
<b>Total</b>	<b>12,012,995</b>	<b>15,981,482</b>	<b>4,435,450</b>	<b>4,445,288</b>	<b>4,457,060</b>

Fish and Wildlife Conservation Commission  
 Financial Report as of August 31, 2008  
**Federal Grants Trust Fund**

**Projected Fund Activity**



**Projected Fund Balance**

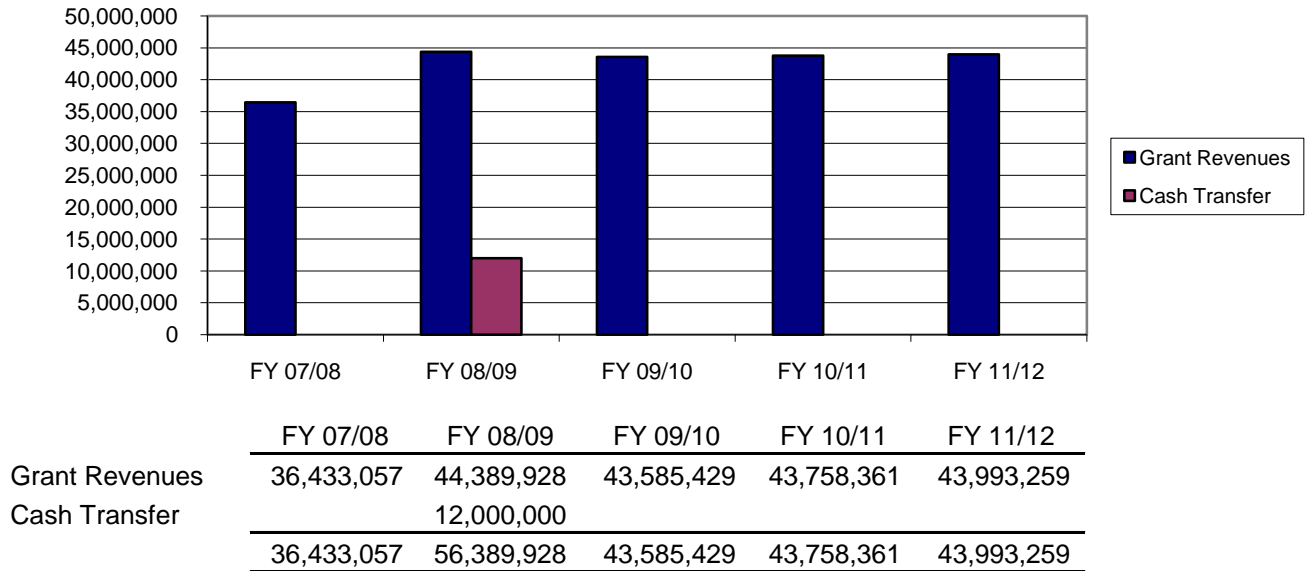


	FY 07/08	FY 08/09	FY 09/10	FY 10/11	FY 11/12
Fund Balance	1,174,556	12,000,000	12,000,000	12,000,000	12,000,000

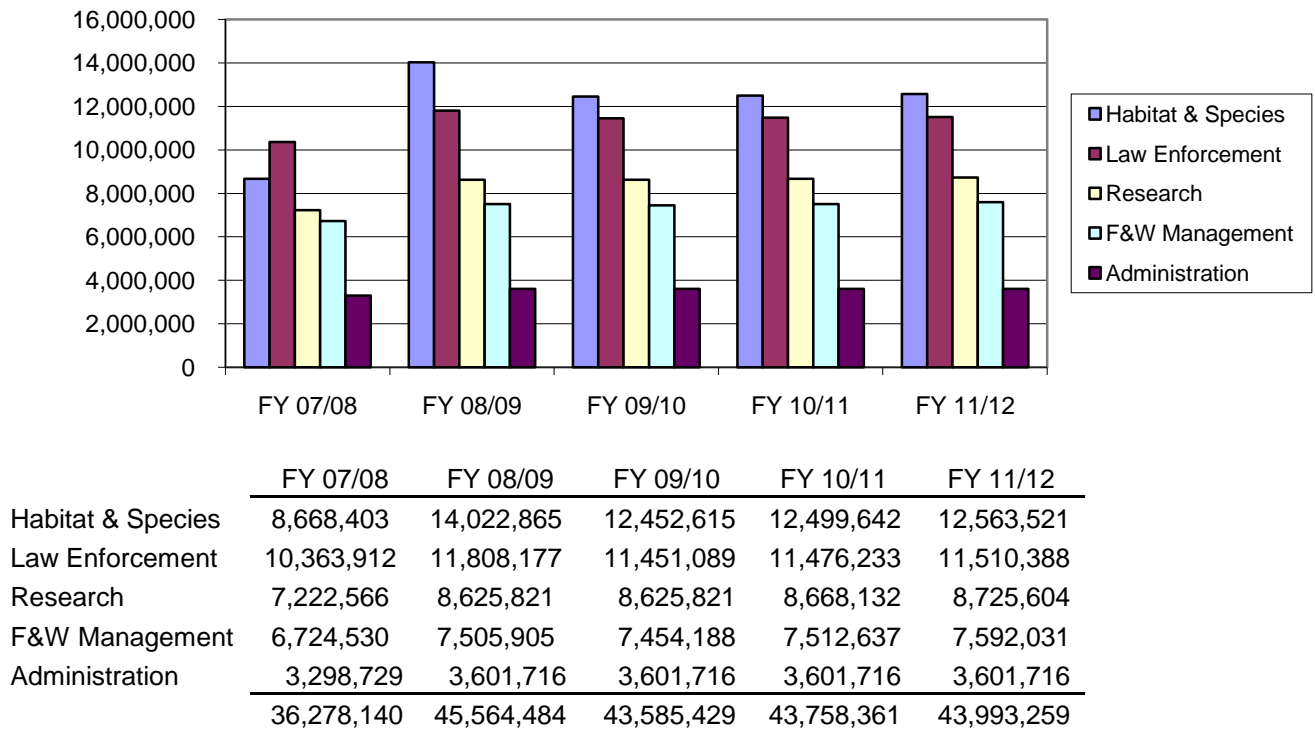
- All expenditures for this trust fund are fully reimbursed from Federal grants.
- FY 08/09 includes a one-time cash transfer of \$12 million to provide cash balance.
- A cash balance of \$12 million is maintained for cash flow purposes.

Fish and Wildlife Conservation Commission  
 Financial Report as of August 31, 2008  
**Federal Grants Trust Fund**  
**Sources and Uses**

**Revenue Sources**

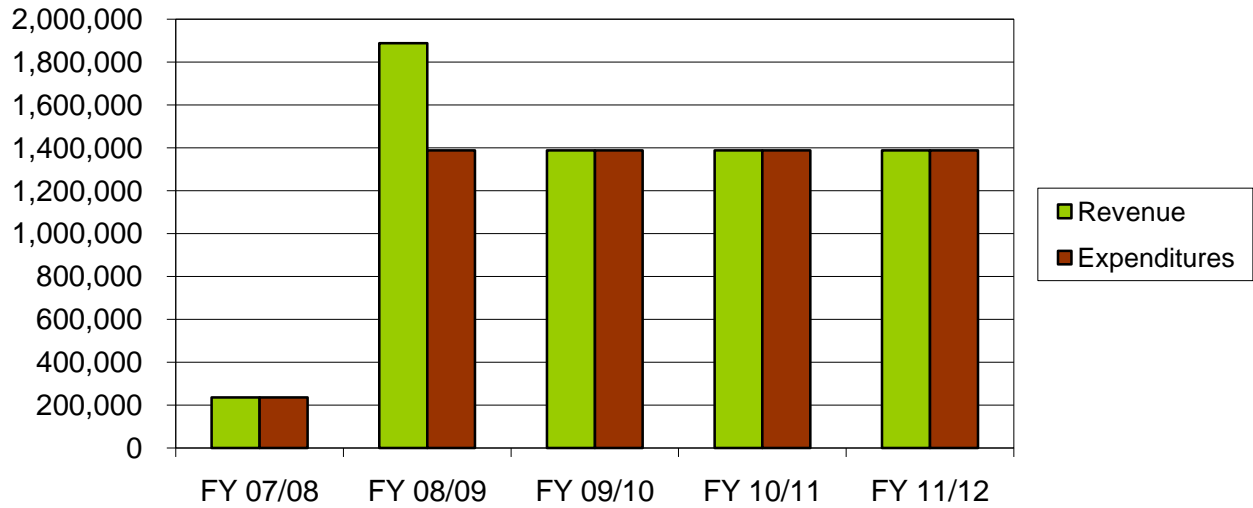


**Fund Uses**

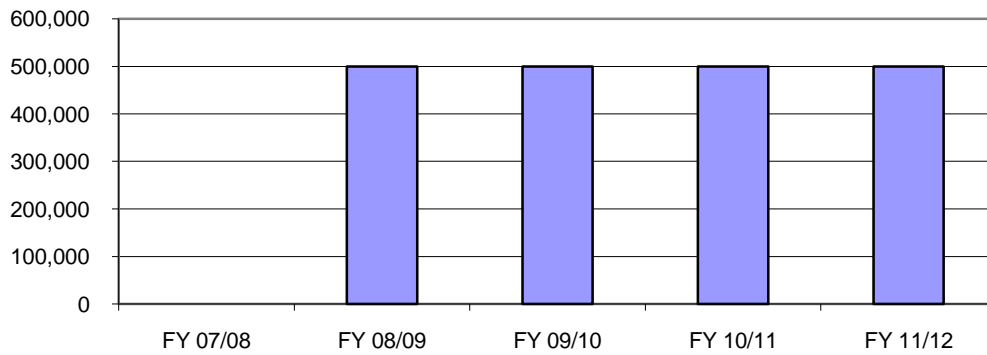


Fish and Wildlife Conservation Commission  
 Financial Report as of August 31, 2008  
**Grants and Donations Trust Fund**

**Projected Fund Activity**



**Projected Fund Balance**

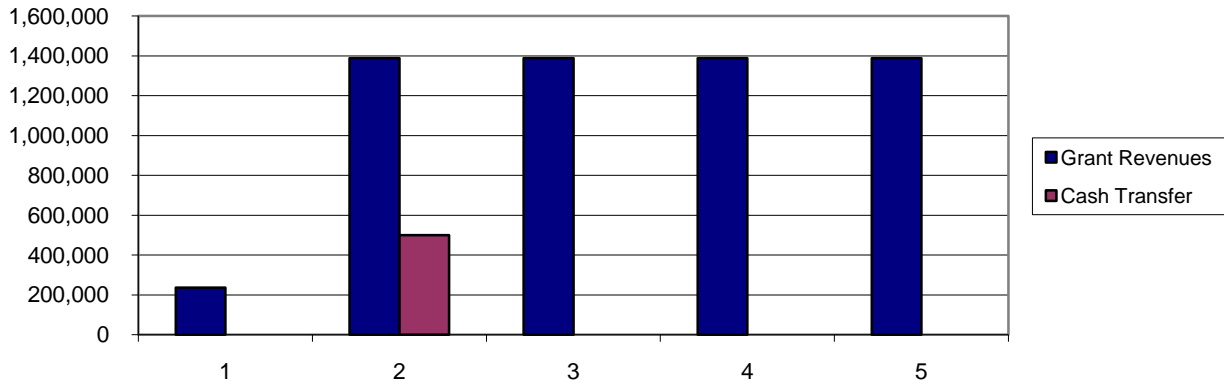


	FY 07/08	FY 08/09	FY 09/10	FY 10/11	FY 11/12
Fund Balance	0	500,000	500,000	500,000	500,000

- All expenditures for this trust fund are fully reimbursed from non-Federal grants
- FY 08/09 includes a one-time cash transfer of \$500,000 to provide cash balance.
- A cash balance of \$500,000 is maintained for cash flow purposes.

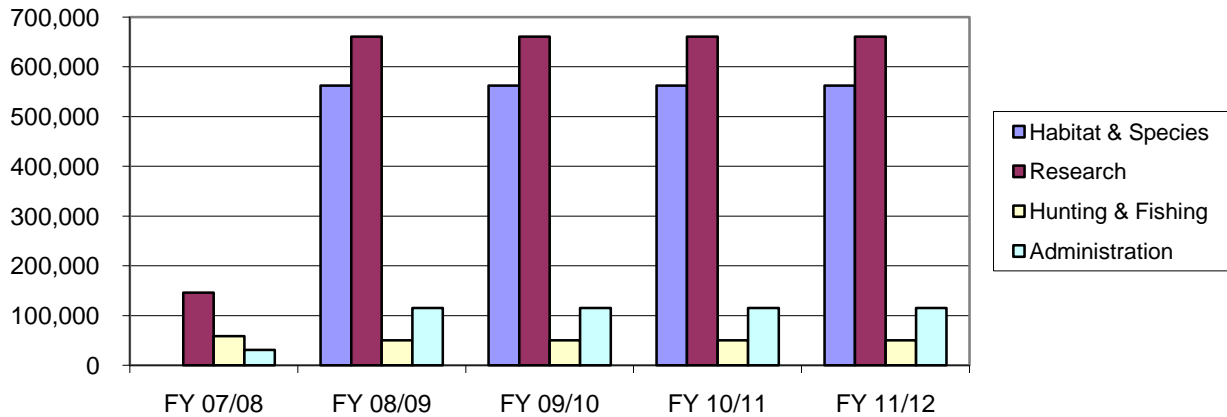
Fish and Wildlife Conservation Commission  
 Financial Report as of August 31, 2008  
**Grants and Donations Trust Fund**  
**Sources and Uses**

**Revenue Sources**



	FY 07/08	FY 08/09	FY 09/10	FY 10/11	FY 11/12
Grant Revenues	235,613	1,388,657	1,388,657	1,388,657	1,388,657
Cash Transfer		500,000			
	235,613	1,888,657	1,388,657	1,388,657	1,388,657

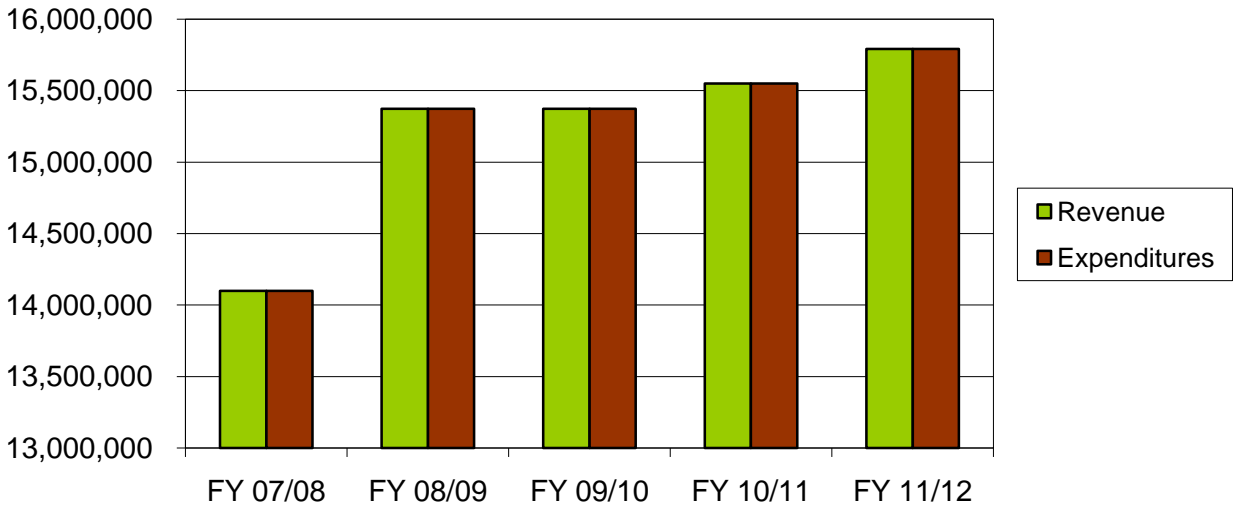
**Fund Uses**



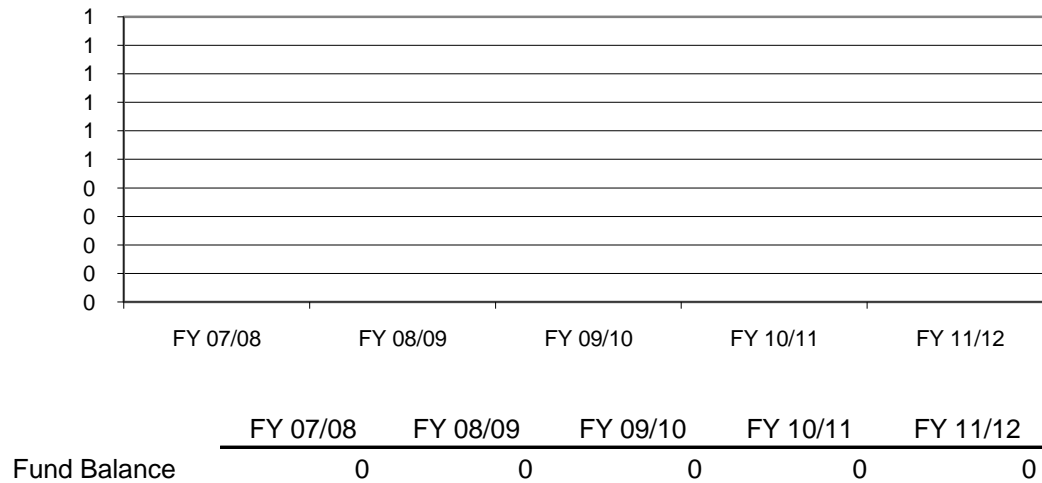
	FY 07/08	FY 08/09	FY 09/10	FY 10/11	FY 11/12
Habitat & Species	0	562,361	562,361	562,361	562,361
Research	146,254	660,472	660,472	660,472	660,472
Hunting & Fishing	58,751	50,494	50,494	50,494	50,494
Administration	30,608	115,330	115,330	115,330	115,330
	235,613	1,388,657	1,388,657	1,388,657	1,388,657

Fish and Wildlife Conservation Commission  
 Financial Report as of October 31, 2008  
**Administrative Trust Fund**

**Projected Fund Activity**



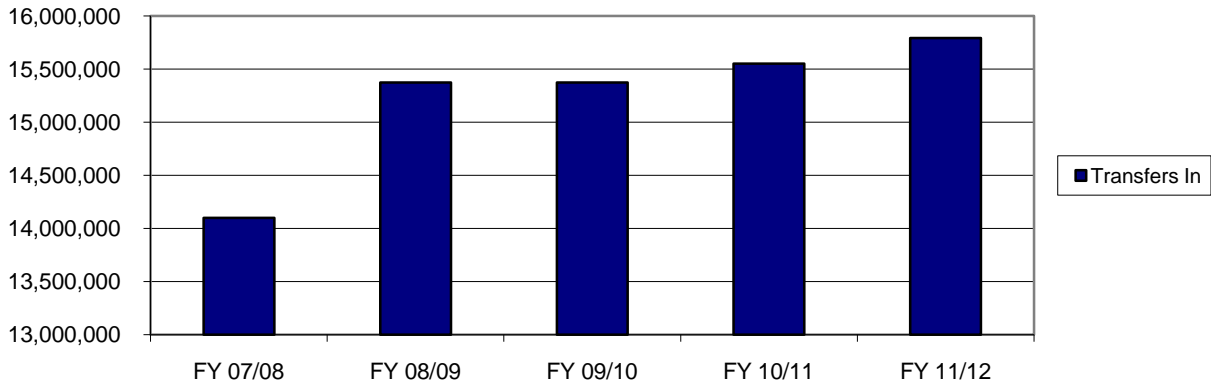
**Projected Fund Balance**



- This trust fund receives transfers from all other trust funds to support central executive and administrative services of the agency
- Beginning in FY 08/09, the Legislature removed all General Revenue from administration and shifted those expenditures to this trust fund.
- The fund balance for this trust fund normally starts and ends the year at zero.

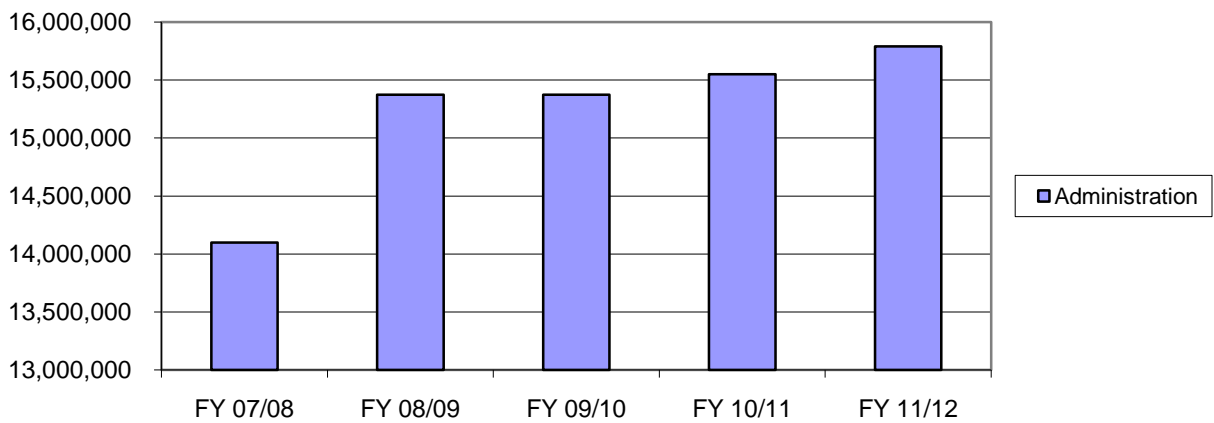
Fish and Wildlife Conservation Commission  
 Financial Report as of October 31, 2007  
**Administrative Trust Fund**  
**Sources and Uses**

**Revenue Sources**



	FY 07/08	FY 08/09	FY 09/10	FY 10/11	FY 11/12
Transfers In	14,099,136	15,372,766	15,372,766	15,550,368	15,791,612
	14,099,136	15,372,766	15,372,766	15,550,368	15,791,612

**Fund Uses**



	FY 07/08	FY 08/09	FY 09/10	FY 10/11	FY 11/12
Administration	14,099,136	15,372,766	15,372,766	15,550,368	15,791,612
	14,099,136	15,372,766	15,372,766	15,550,368	15,791,612